

Optional Items

265020060G(02)



Pass-through Door Switch Module    SmartVISION™ Pro CCD    Multiple Table Choices    Air Compressor Unit    Rotary Attachment / Rotary Chuck    Fume Extraction System    External Signal Indicator    SmartGUARD™ Fire Alarm (Patented)

Specification	S400			
	CO2	Fiber	Dual	
Work Area	40 x 24 in. (1016 x 610 mm)			
Max. Part Size (L x W x H)	All doors closed	41.4 x 25.4 x 11 in. (1053 x 647 x 280 mm)		
	All door open	41.4 x ∞ x 11 in. (1053 x ∞ x 280 mm)		
Table Size	Standard Grid Cutting Table 40.1 x 24.1 in. (1019 x 613 mm)			
Dimensions	56.7 x 35.5 x 41.3 in (1440 x 900 x 1048mm)			
Weight	CO <sub>2</sub> 30W~40W	260 kg / 573 lb		
	CO <sub>2</sub> 60~100W	270 kg / 595 lb		
	Fiber 20W~60W	260 kg / 573 lb		
Laser Source	10.6-μm CO <sub>2</sub> laser	9.3-μm CO <sub>2</sub> laser	Fiber laser	10.6-μm CO <sub>2</sub> laser: 30 to 120W 9.3-μm CO <sub>2</sub> laser: 60W
Cooling	30~120W    60W    20 / 30 / 60W    Fiber laser: 20 / 30 / 60W			
Drive	Air-cooled, Operating environment temperature 15°- 30°C (59°- 86°F)			
Maximum Motor Speed	Closed-loop DC servo control			
Speed Control	140 IPS			
Power Control	Adjustable from 0.1~100% (Up to 16 color-linked speed settings per job)			
Engraving Capability	Adjustable from 0~100% (Up to 16 color-linked power settings per job)			
Distance Accuracy	256-level gray scale image processing capability			
Z-Axis Movement	0.254 mm or 0.1% of move, whichever is greater			
Focus Lens	Automatic			
Resolution (DPI)	CO <sub>2</sub> : Standard 2.0" (Optional 1.5", 2.5" & 4.0") Fiber: Standard 2.0" (Optional 4.0") Dual (CO <sub>2</sub> +Fiber): Standard 2.0" (Optional 3.0" & 4.0")			
Computer Interface	Available 125, 250, 300, 380, 500, 600, 760, 1000, 1500			
Compatible Operating System	10 Base-T Ethernet USB-A for USB storage USB-B 2.0 for connection			
Control Panel	MS Windows 64 Bit			
Safety	Touch Screen			
Operating Voltage	Class I Laser Product Complies with EN60825-1:2014, EN ISO 13849-1:2015 Class II Laser Product Complies with CDRH for CO <sub>2</sub> Laser Class 3R Laser Product Compliant with CDRH for Fiber & Dual Laser sources 2006/42/EC Machinery Directive Compliance Class 4 Laser Product Compliant with CDRH with the optional pass-through door module			
Fume Extraction System	Below 80Watt, 100-240VAC, 50/60HZ Auto Switching, max. 15A 80Watt and above, 200-240VAC, 50/60HZ Auto Switching, max. 15A			
	External exhaust system with minimum flow rate 800m3/h (CFM 471 ft3/h) is required, 2.3kPA negative pressure (Pure-Air PA-1500FS @ 4" exhaust port)			

\*\* Speed is not equal to throughput. See dealer or visit [www.gccworld.com](http://www.gccworld.com) for more detail.  
▲ Specifications are subject to change without prior notice.

Authorized Dealer

**DBK d.o.o.**  
Samostanska ulica 3  
2360 RADLJE OB DRAVI  
tel: +386 41 409 268  
email: [info@dbk.si](mailto:info@dbk.si)  
[www.dbk.si](http://www.dbk.si)

[www.GCCworld.com](http://www.GCCworld.com)



# The Flagship Model of The Laser Engraver

Your Best Ever, Beyond Expectation, Unlimited Laser Machine.



## Laser Engraver S400

- 40" x 24" x 11" (1016 mm x 610 mm x 30 mm) extra large working area
- 140ips high speed with DC servo motor for precise and rapid movement of the laser carriage
- GCC SmartFLOW™ technology provides outstanding dust protection
- GCC SmartLID™ invention makes maintenance a lot easier
- QSM (Quality Speed Mode) maintains 100% engraving quality while operating at maximum speed
- Patented SmartACT™ motion control technology increases your productivity by reducing ramping process and job running time
- Drag and engrave feature assures remarkably easy and fast set-ups
- Pass-through front and rear doors to accommodate long working pieces
- CO<sub>2</sub> and Fiber laser option in one laser machine



GCC Headquarters 4F-1, No.236, Fude 2nd Rd., Xizhi Dist., New Taipei City 22151, Taiwan 886-2-6616-6692 Fax : 886-2-2694-6875  
 GCC China No.1, Chen Feng Road, Yushan, Kunshan, Jiangsu 215300, China 86-512-5726-1515 Fax : 86-512-5726-1518  
 GCC Europe B.V. Eglantierbaan 43-45, 2908 LV, Capelle a/d IJssel, The Netherlands 31-10-458-9367  
 GCC America, Inc 20453 E Valley Blvd. Walnut, CA 91789, USA 1-909-718-0248 Fax : 1-909-718-0251  
 US & Canada Only Toll Free: 1-888-284-5211

# GCC LaserPro S400



## Laser Engraver GCC LaserPro S400

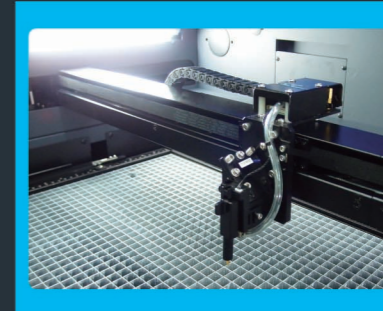
Inherit all the advantages from Spirit Hybrid, a brand new machine – S400 features 140ips processing speed by DC servo motor, innovative touch panel, user friendly interface and a modern good looking design. Together with SmartFLOW™ dust prevention technology and SmartLID™ easy access invention, S400 presents you the highest throughput and precise laser quality. GCC S400 makes all your imaginations to life at the speed of light.

### Features



#### SmartFLOW™ Technology

SmartFLOW™ invention creates a perfect Air Flow to enhance the vacuum effect and bring out the dust completely while working.



#### SmartACT™ (Patented)

Ground-breaking technology that reduces the ramping process and the job running time, which translates into higher productivity.



#### SmartLID™ Easy Access

Easy access design simplifies maintenance.



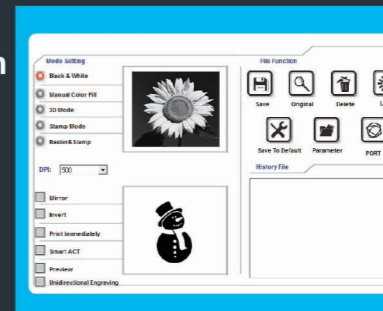
#### Pass-through Front & Rear Doors (Optional)

Convenient front and rear door open design enables loading of extremely long working pieces with ease and extends business flexibility.



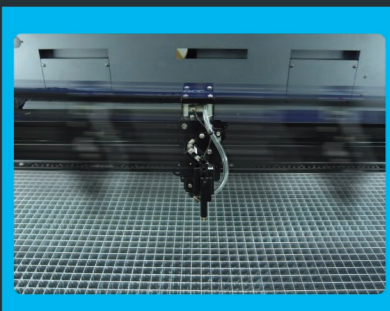
#### Intuitive Touch Screen

Operation is easy and intuitive with the 4" touchscreen.



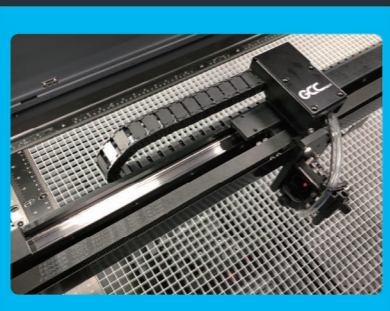
#### User Friendly Driver Interface

Starting from end users' view, GCC driver evolves into a brand new design with the intuitive interface to favor each user.



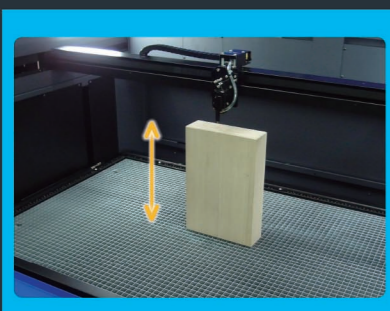
#### Perfect Cutting and Engraving Throughput

Maximum 140ips processing speed with powerful DC servo motor to boost productivity while maintaining precision.



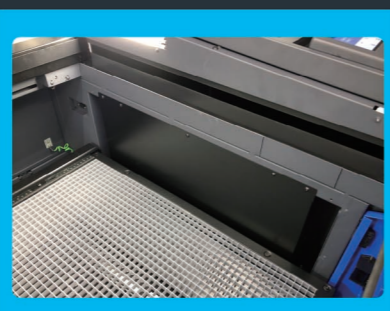
#### SmartSEAL™ Technology

New gantry design to prevent dust, the easy take-off cover also makes the maintenance a lot easier.



#### Higher Working Depth

Depth of Z-axis up to 11" (280 mm) thick.



#### Dust Prevention

Incorporating metal panels to protect key components, but not seal entirely to ease any difficulty of maintenance.

## GCC LaserPro S400 Application

