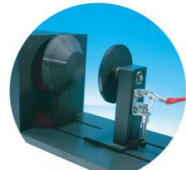


Optional Items

26501112G(06)



Pass-through Door Switch Module



Rotary Attachment



SmartAIR Nozzle



SmartGUARD™ Fire Alarm (Patented)



External Control Interface Board



SmartPRINT™



Flame Sprinkler System



SmartBOX™ Cutting Accessory



Air Compressor Unit



Fume Extraction System



External Signal Indicator



Laser Engraver

GCC LaserPro Spirit LS

Smart Innovative Evolution at Its Best

Specification		Spirit LS
Work Area		25 x 18 in. (640 x 460 mm) Extendable to 29 x 18 in. (740 x 460 mm)
Max. Part Size (L x W x H)	All doors closed	30 x 19 x 6.5 in. (762 x 482.6 x 165 mm)
	All doors open	30 x ∞ x 6.5 in. (762 x ∞ x 165 mm)
Table Size		31.1 x 20.9 in. (790 x 530 mm)
Dimensions		44.3 x 28.3 x 39.6 in. (1125 x 720 x 1005 mm)
Laser Source		12 to 100W 10.6-µm sealed CO2 Laser / 20W & 60W 9.3-µm sealed CO2 Laser
Cooling		Air-cooled, Operating environment temperature 15°- 30°C (60°- 86°F)
Drive		Closed-loop DC servo control
Maximum Motor Speed		80 IPS**
Speed Control		Adjustable from 0.1-100% (Up to 16 color-linked speed settings per job)
Power Control		Adjustable from 0-100% (Up to 16 color-linked power settings per job)
Engraving Capability		256-level gray scale image processing capability
Distance Accuracy		0.254 mm or 0.1% of move, whichever is greater
Z-Axis Movement		Automatic
Focus Lens		Standard 2.0", optional 1.5", 2.5", & 4.0" available
Resolution (DPI)		Available 125, 250, 300, 380, 500, 600, 760, 1000, 1500
Computer Interface		10 Base-T Ethernet, Full speed 2.0 USB
Compatible Operating Systems		MS Windows
Display Panel		4-line LCD display showing current file name, total working time, laser power, engraving speed, file(s) loaded into memory buffer, setup and diagnostic menus
Safety		Class I Laser Product Compliant with EN60825, Class II Laser Product Compliant with CDRH, 2006/42/EC Machinery Directive Compliance Class 4 Laser Product Compliant with CDRH with the optional pass-through door module
Operation Voltage		Laser below 80Watt, 100-240VAC, 50-60Hz Auto Switching, Max. 15A Laser 80Watt and above, 200-240VAC, 50-60Hz, Max. 15A
Fume Extraction System		External exhaust system with minimum flow rate 640m³/h (CFM 377 ft³/h) is required, 2.3kPA negative pressure (Pure-Air PA-1000FS @ 4" exhaust port)

* Speed does not equal to throughput. See dealer or visit www.GCCworld.com for more details.

** For 30W and above models. (60 IPS for 12W & 25W models)

△ Specifications are subject to change without prior notice.

* The flow rate is determined by a default fume extraction system; the flow rate may vary due to a different fume extraction system.



Authorized Dealer

DBK d.o.o.
Samostanska ulica 3
2360 RADLJE OB DRAVI
tel: +386 41 409 268
email: info@dbk.si
www.dbk.si

www.GCCworld.com



Spirit LS

- 25" x 18" (640 x 460 mm) working area
- Up to 80 IPS high working speed
- Patented SmartACT™ motion control technology for higher throughput
- Closed-loop DC servo motor for precise movement of laser carriage
- Reliable DuraGuide motion system with reinforced Kevlar belt delivers superb output quality
- Pass-through front and rear doors to accommodate long working pieces
- Plug and play standard USB port for rapid data transmission
- Patented SmartGUARD™ fire alarm device to provide maximum operation safety



GCC Headquarters 4F-1., No.236, Fude 2nd Rd., Xizhi Dist., New Taipei City 22151, Taiwan 886-2-6616-6692 Fax : 886-2-2694-6875
GCC China No.1, Chen Feng Road, Yushan, Kunshan, Jiangsu 215300, China 86-512-5726-1515 Fax : 86-512-5726-1518
GCC Europe B.V. Eglantierbaan 43-45, 2908 LV, Capelle a/d IJssel, The Netherlands 31-10-458-9367
GCC America, Inc 20453 E Valley Blvd. Walnut, CA 91789, USA 1-909-718-0248 Fax : 1-909-718-0251
US & Canada Only Toll Free: 1-888-284-5211



Anodized Metal

Signage

Stone / Tile

Acrylic

Leather

Textile / Apparel

Laser Engraver

GCC LaserPro Spirit LS

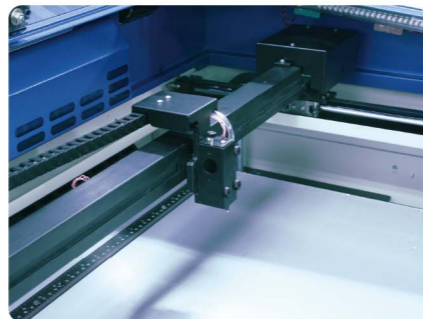


GCC LaserPro Spirit LS

LaserPro Spirit LS distinguishes itself from the competition by combining output quality, reliability, and user-friendliness. With an abundance of useful and innovative features, the Spirit LS sets the standard as the industrial benchmark for laser engravers.

DuraGuide

Systematic and reliable motion system embedded with strong mechanical framework, reinforced Kevlar belts, and accurate servomotor control technology to deliver superb output quality under rapid movement.

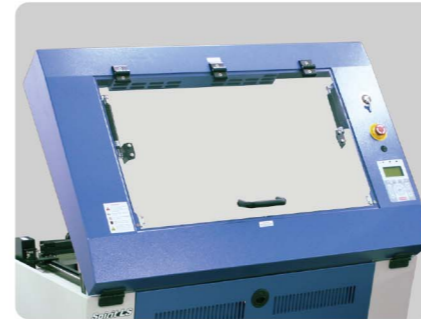


SmartPIN AutoFocus (Patented)

The plug-and-play probe design makes focusing a one-touch process and provides the accuracy and precision required for optimum quality in the lasing process.

SmartLID™ (Patented)

An innovative lid that opens from both ends allowing easier access for daily maintenance.



Pass-through Front and Rear Doors (Optional)

Optional front and rear door design enables loading of extremely long working pieces.

SmartACT™ (Patented)

Ground-breaking technology that reduces the ramping process, the job running time, which translates into higher productivity.

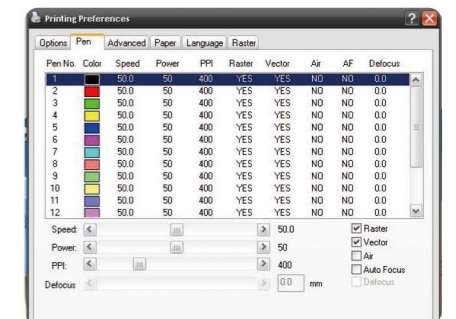


Key Switch & Emergency Stop

Key switch safeguards the machine from unauthorized use. Prominent emergency button located on the top of the machine allows operators to stop the laser and the motion carriage immediately to provide a safe operating environment.

Easy to Use Control Panel

A control panel with coherent hot-key design and graphic icon displays that allows you to directly change the laser parameter setting, set jobs to repeat unlimited times, queue jobs, delete jobs, and more.



Innovative Software Features

Various user friendly features such as SmartCENTER, Defocus by pen, allows users to reduce set up time and make easy adjustments to achieve marvelous output quality.